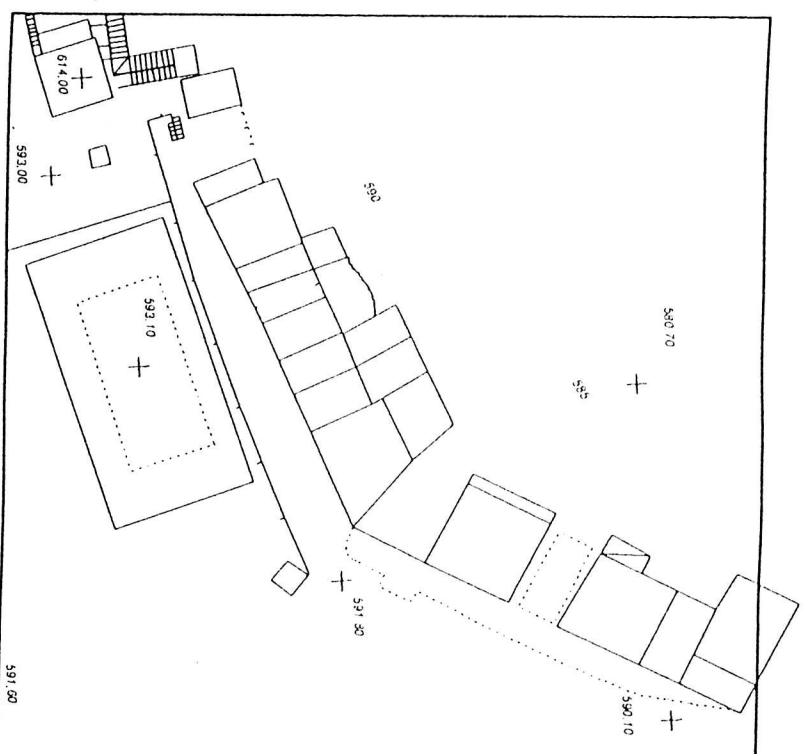
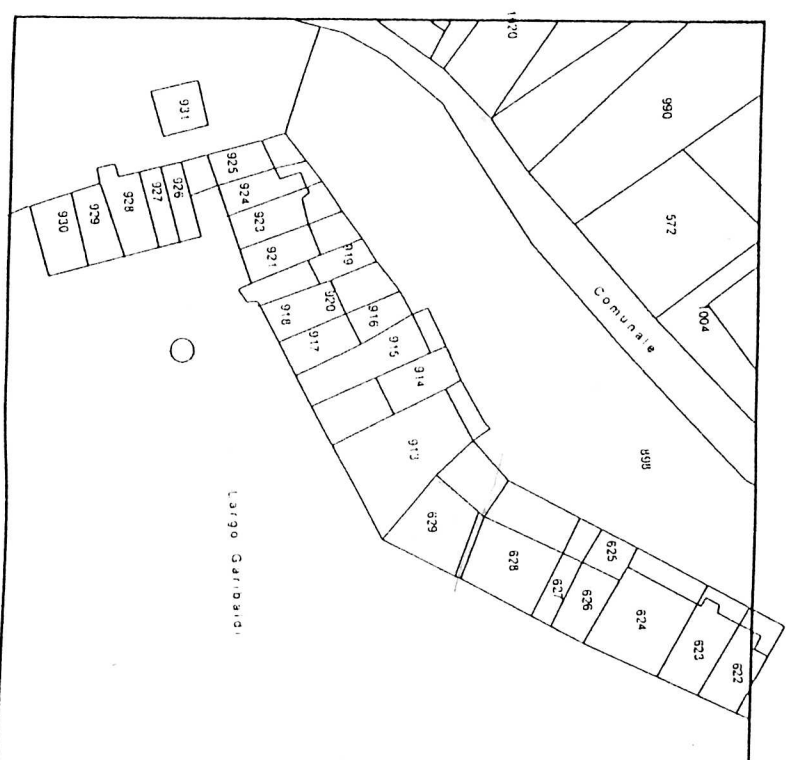


AMBITO URBANO "A"



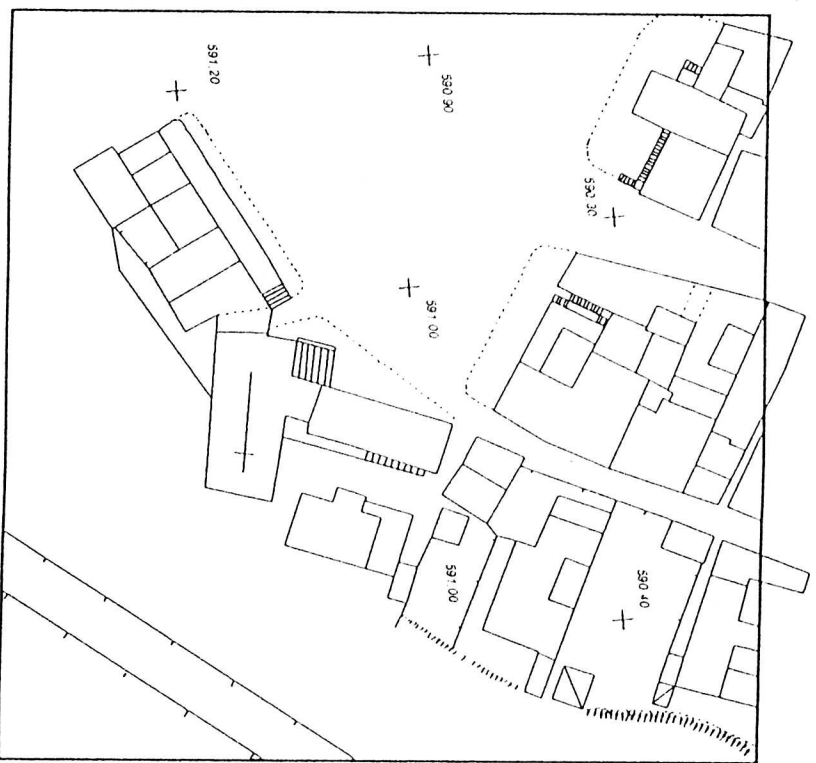
BASE AEROFOTOGRAMMETRICA



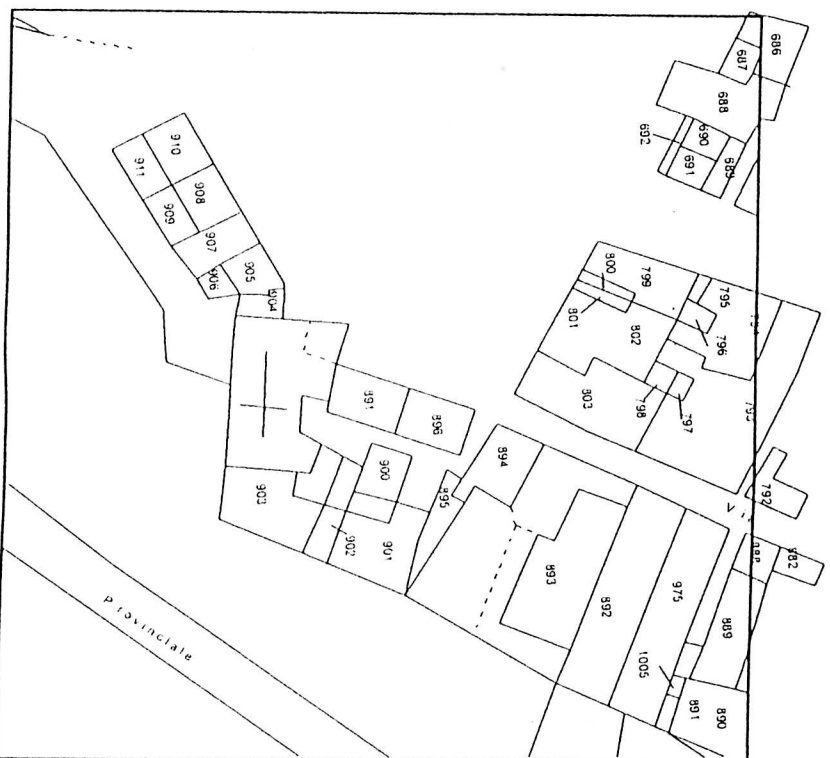
BASE CATASTALE



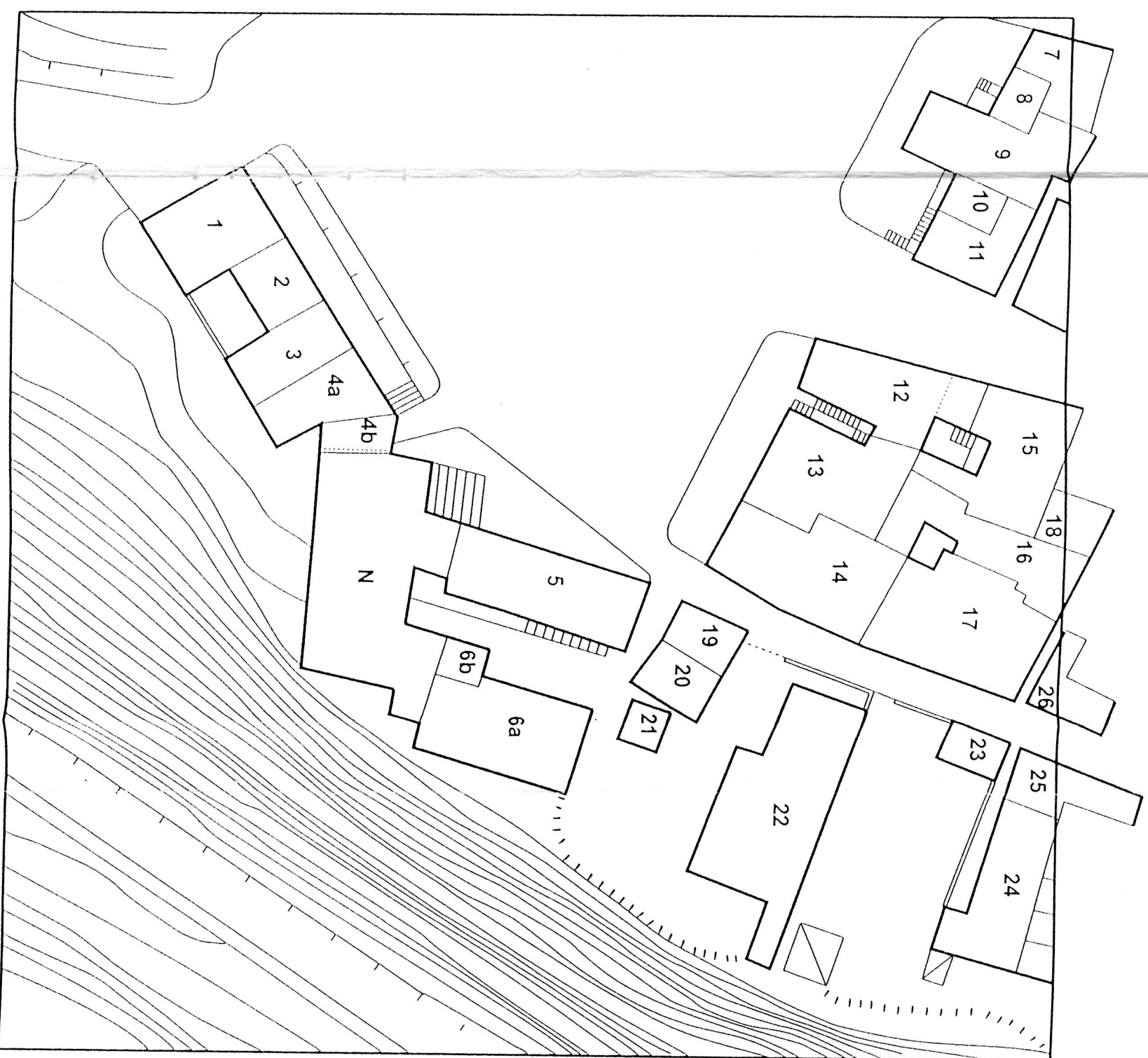
BASE DI P.P.



BASE AEROFOTOGRAMMETRICA



BASE CATASTALE



AMBITO URBANO "B"

BASE DI P.P.

AMBITO URBANO "C"

BASE AEROFOTOGRAMMETRICA

This map shows the aerophotogrammetric base. It displays the outlines of buildings and a network of roads. A prominent road runs horizontally across the upper portion of the map. Several building footprints are scattered throughout the area, with some showing internal structural details like walls and courtyards.

BASE CATASTALE

This map shows the cadastral base. It displays the boundaries of individual property lots, many of which are numbered. Building footprints are overlaid on these lots. A road, labeled 'P. San', runs horizontally across the middle of the map. The map is highly detailed, showing the precise boundaries and areas of each property.

BASE DI P.P.

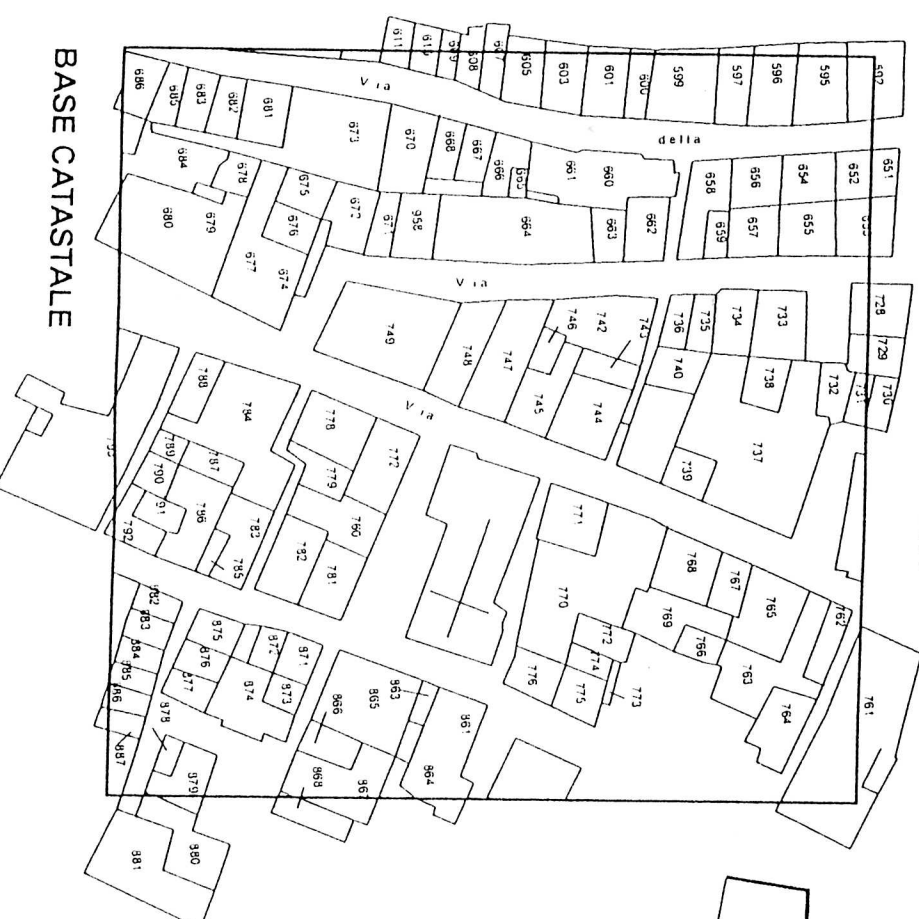
This map shows the base of the urban area. It displays the outlines of buildings and a network of roads. A prominent road runs horizontally across the upper portion of the map. Several building footprints are scattered throughout the area, with some showing internal structural details like walls and courtyards. The map is highly detailed, showing the precise boundaries and areas of each property.



AMBITO URBANO "D"



BASE AEROFOTOGRAMMETRICA

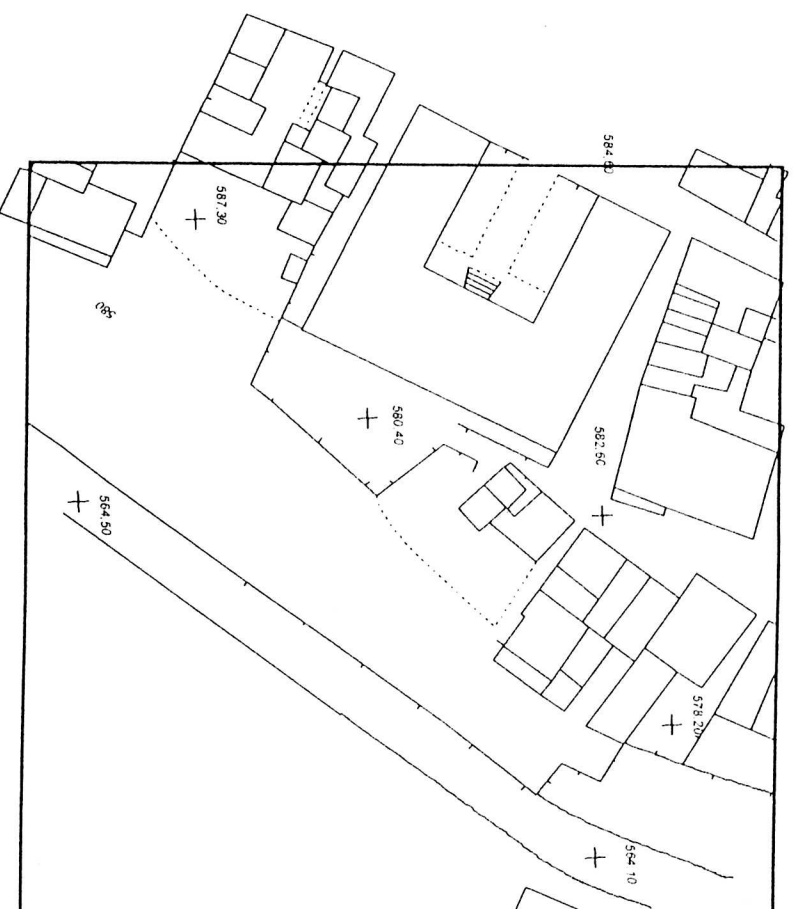


BASE CATASTALE

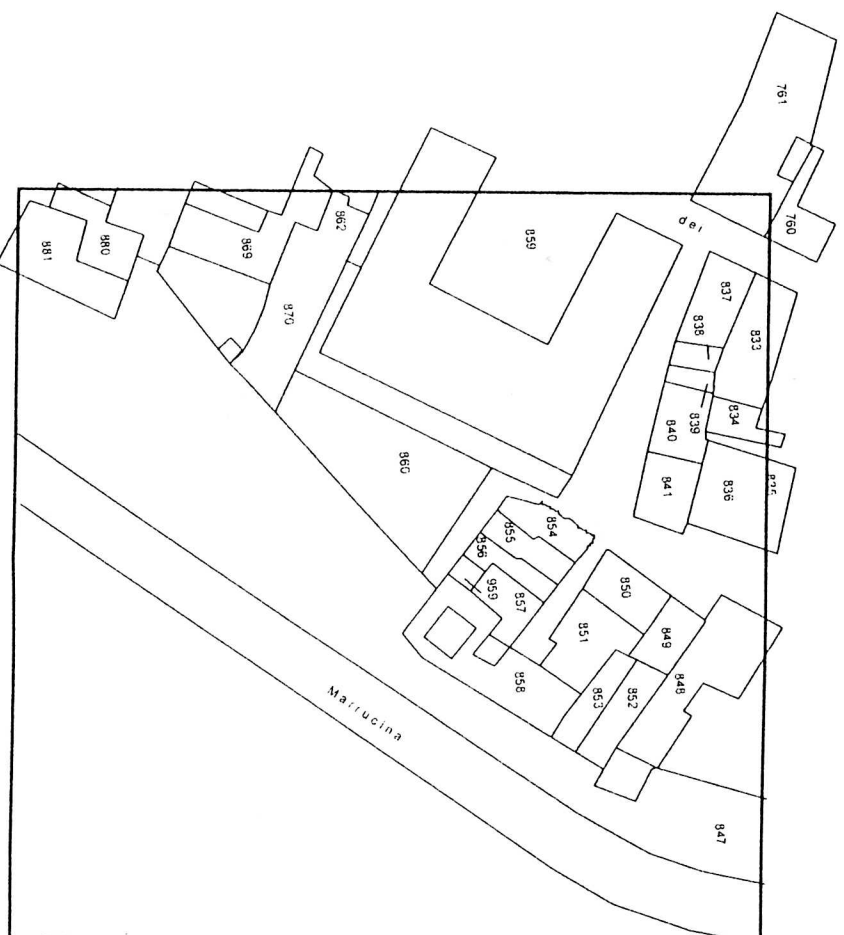


BASE DI P.P.

AMBITO URBANO "E"



BASE AEROFOTOGRAMMETRICA

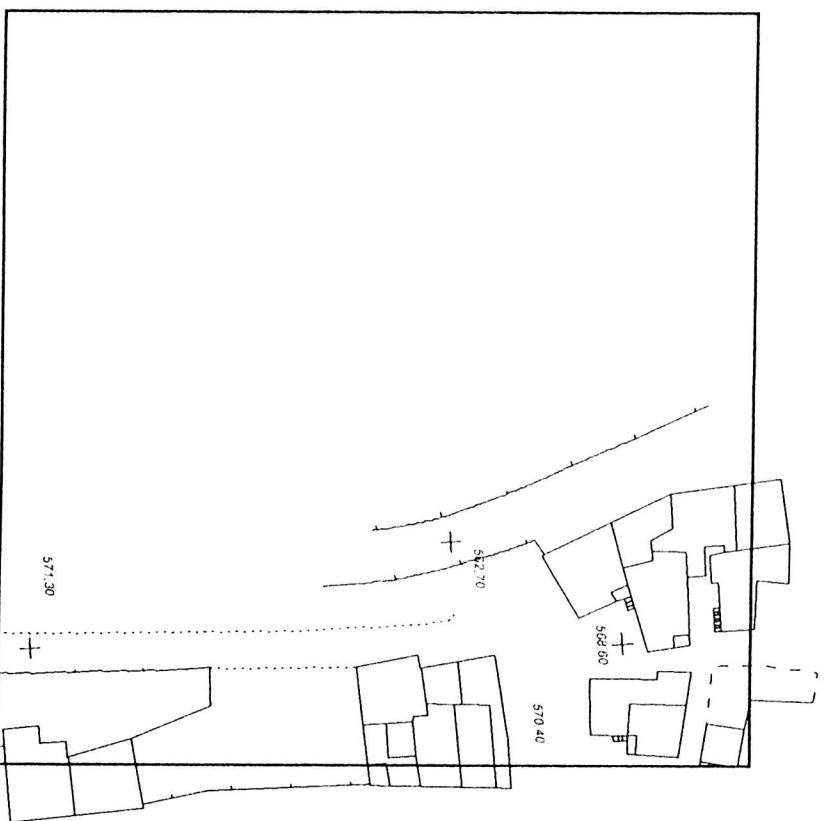


BASE CATASTALE

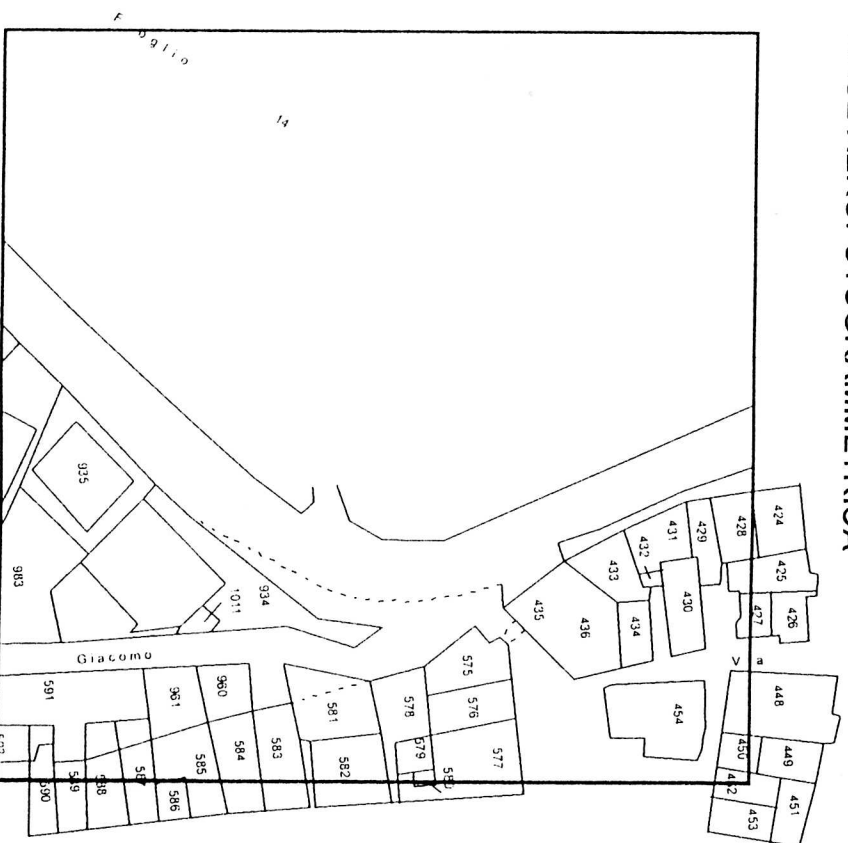


BASE DI P.P.

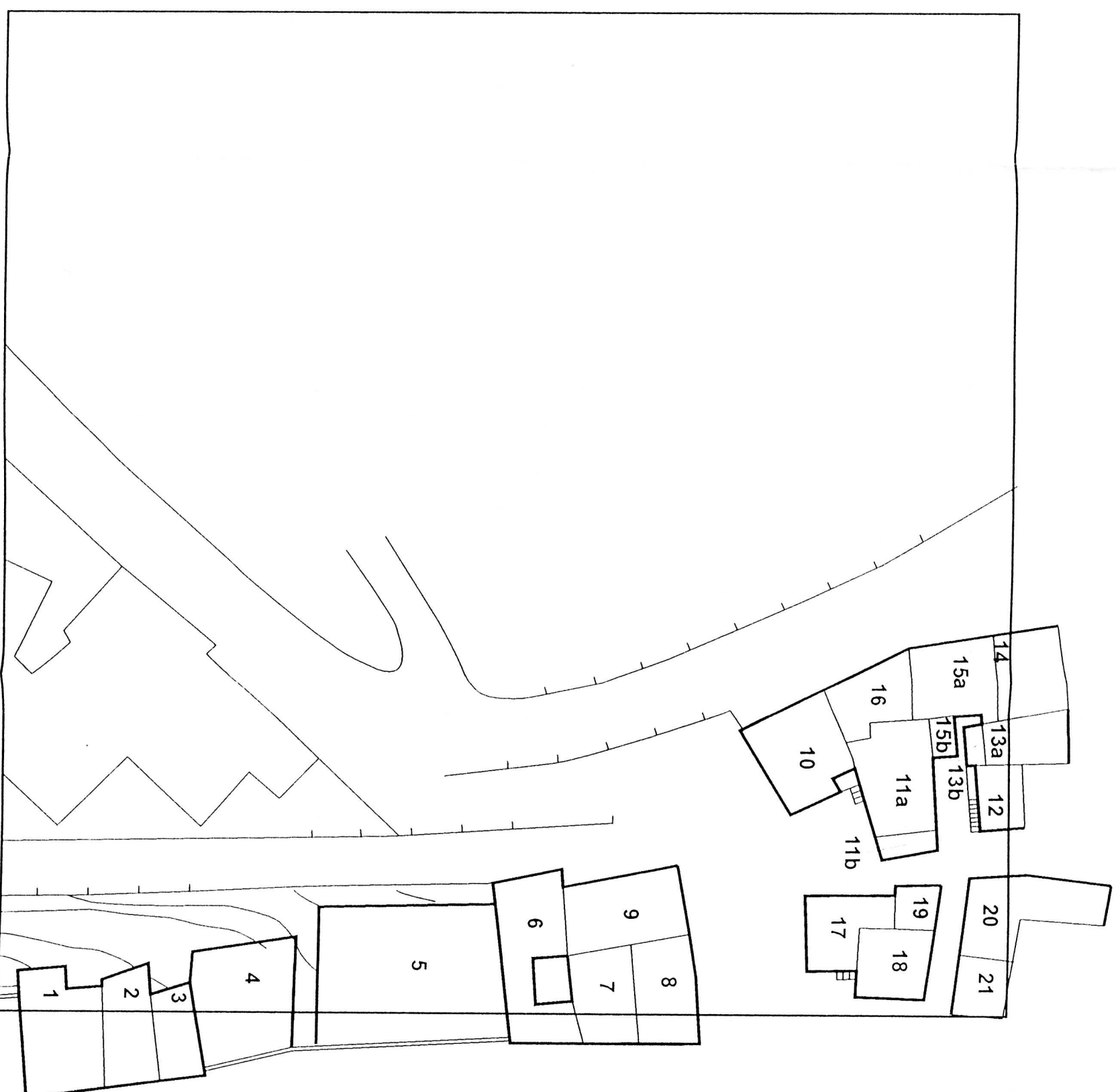
AMBITO URBANO "F"



BASE AEROFOTOGRAMMETRICA



BASE CATASTALE



BASE DI P.P.

AMBITO URBANO "G"



BASE AEROFOTOGRAMMETRICA

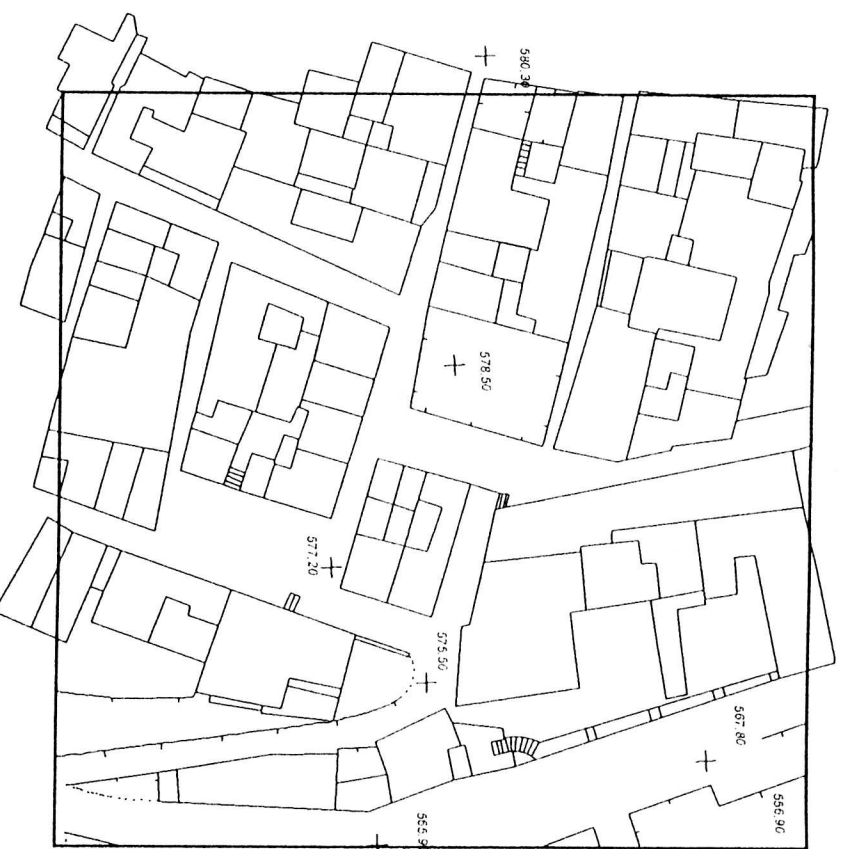


BASE CATASTALE



BASE DI P.P.

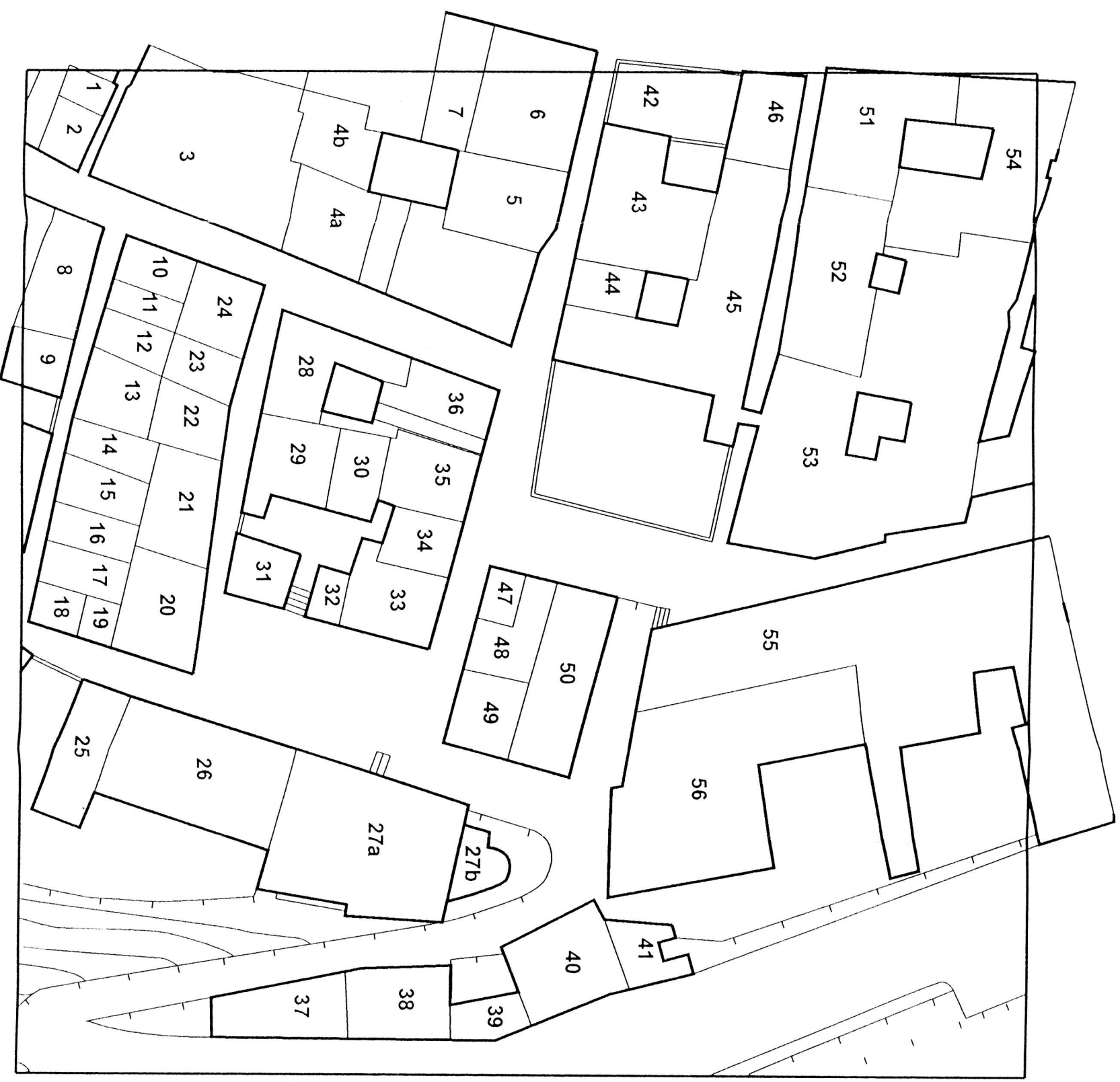
AMBITO URBANO "H"



BASE AEROFOTOGRAMMETRICA



BASE CATASTALE



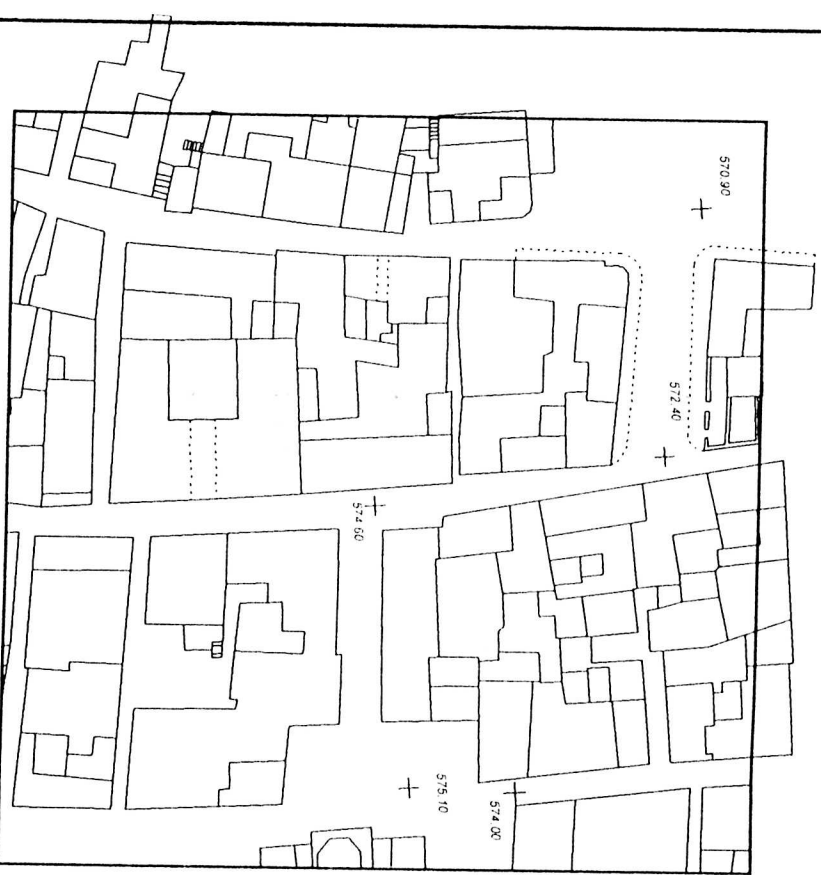
BASE DI P.P.

This is a detailed site plan of a residential development, likely a townhome or condominium complex. The plan features 30 numbered lots, arranged in a central cluster and along the bottom edge. The lots are numbered as follows:

- 1, 2, 3, 4, 5a, 5b, 6, 7, 8, 9, 10, 11, 12, 13, 14, 15, 16, 17, 18, 19, 20, 21, 22, 23, 24, 25, 26, 27, 28, 29, 30

The plan shows building footprints, parking areas, and a road network. The central cluster of lots (1-15) is surrounded by a road on the top and right. The bottom edge of the plan shows a road and several additional lots (16-30). The lots are numbered in a way that suggests a specific layout, with some lots (e.g., 1, 2, 3, 4, 5a, 5b, 6, 7, 8, 9, 10, 11, 12, 13, 14, 15) forming a central core and others (e.g., 16-30) forming a perimeter or additional sections.

BASE DI P.P.



BASE AEROFOTOGRAMMETRICA



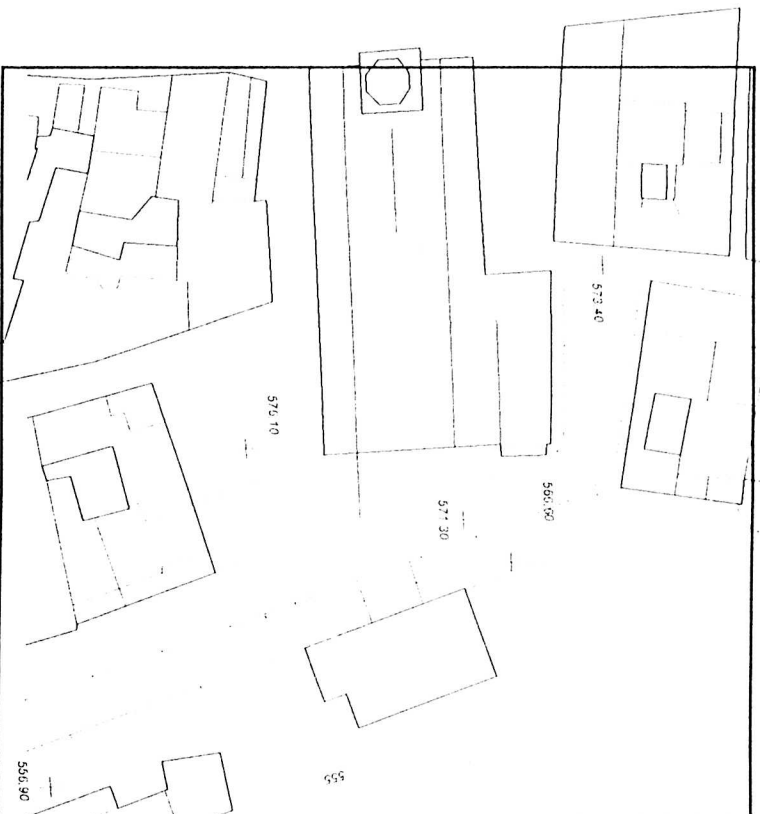
BASE CATASTALE



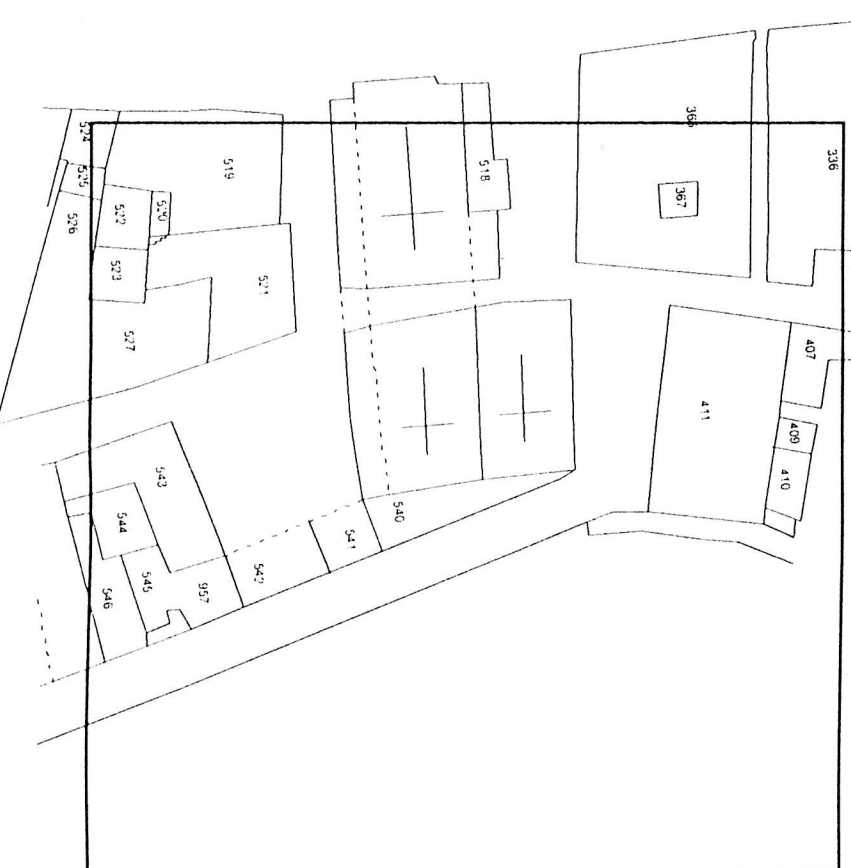
AMBITO URBANO "L"

BASE DI P.P.

AMBITO URBANO "M"



BASE AEROFOTOGRAMMETRICA

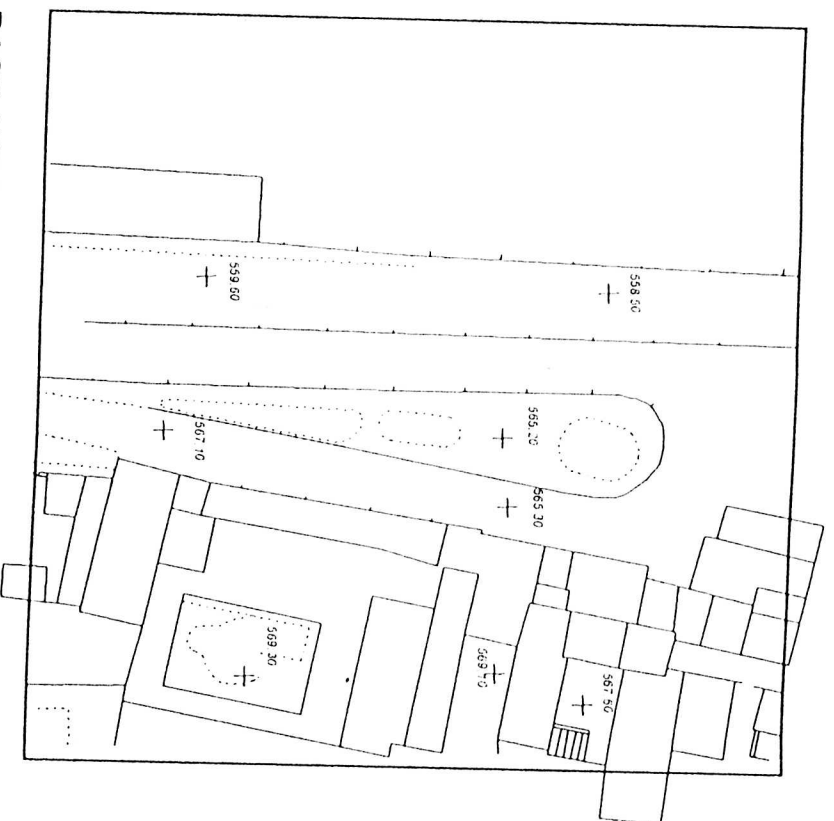


BASE CATASTALE

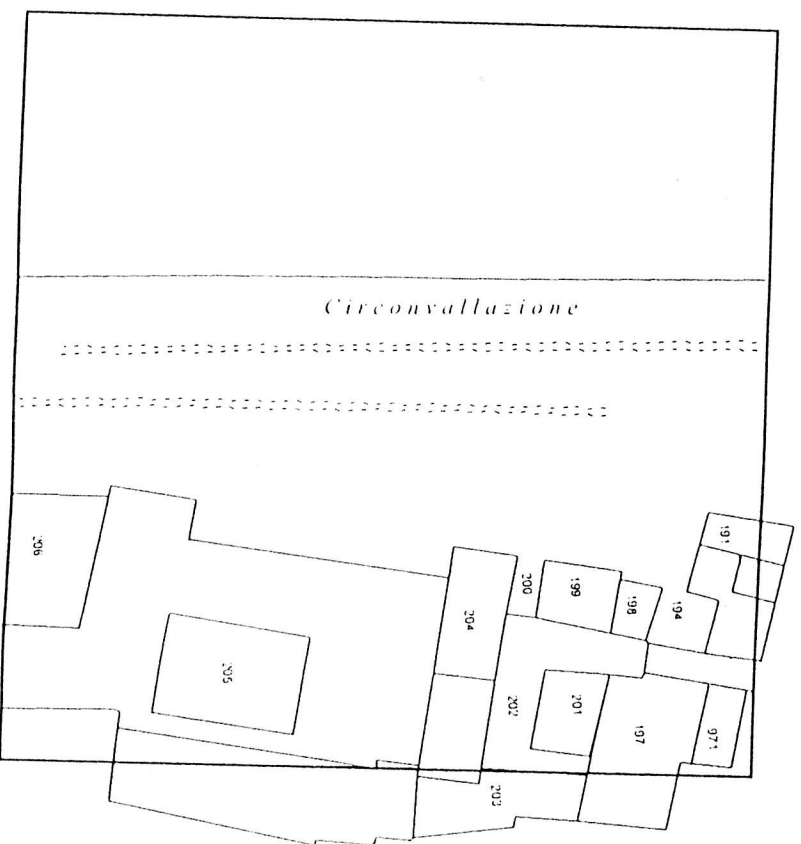


BASE DI P.P.

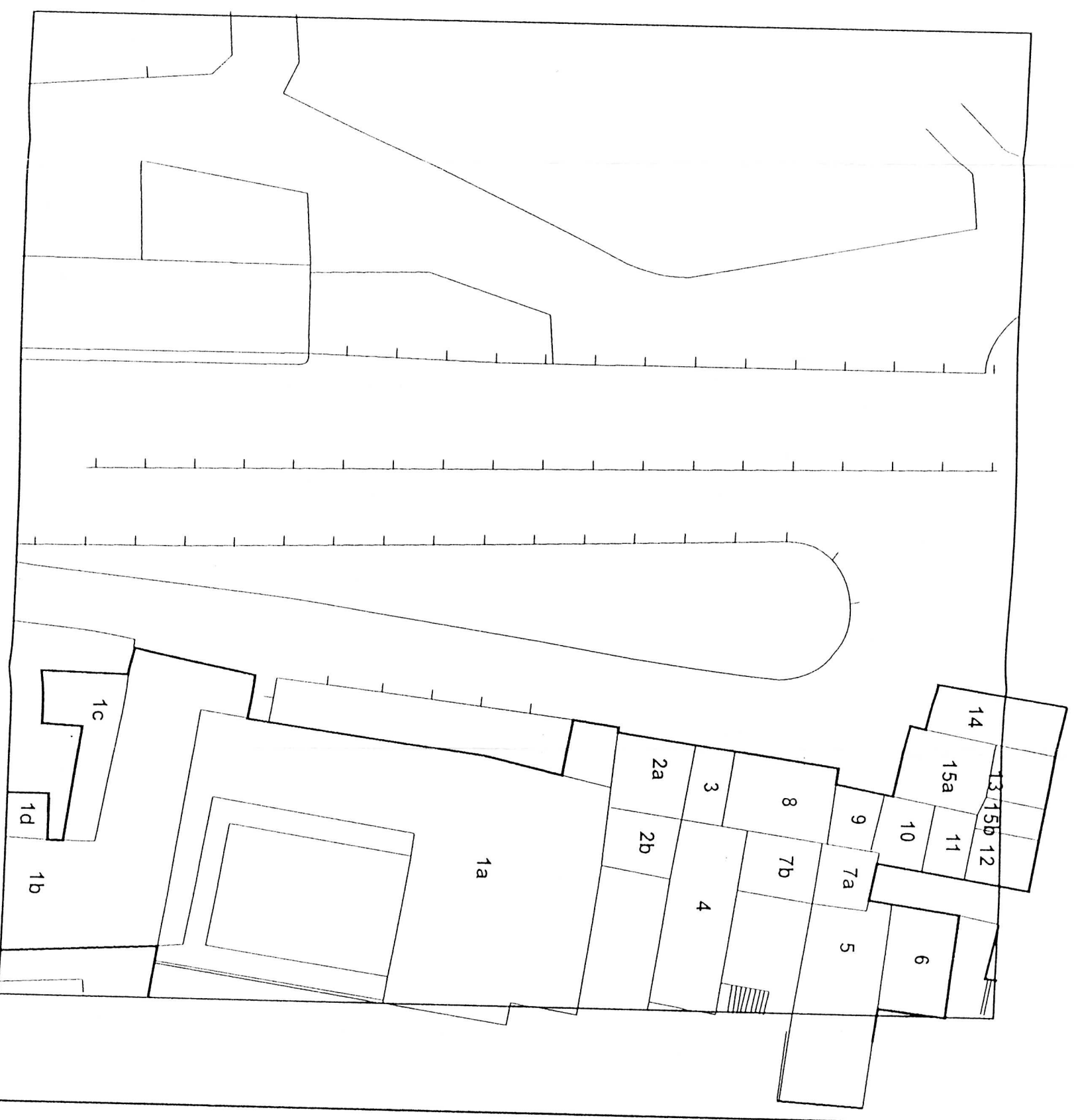
AMBITO URBANO "N"



BASE AEROFOTOGRAMMETRICA



BASE CATASTALE



BASE DI P.P.

AMBITO URBANO "O"



BASE AEROFOTOGRAFOMETRICA

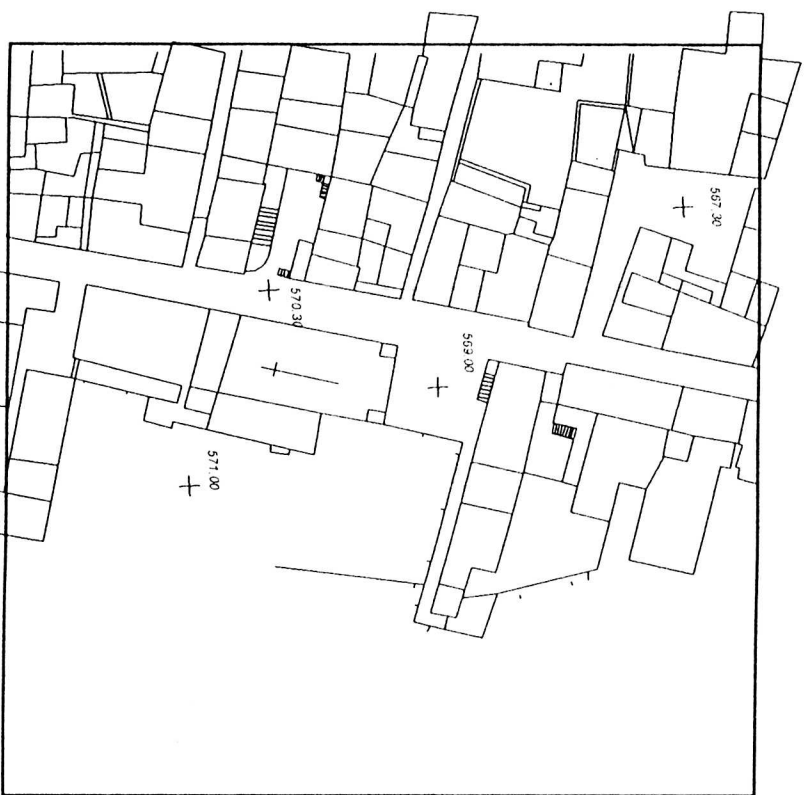


BASE CATASTALE

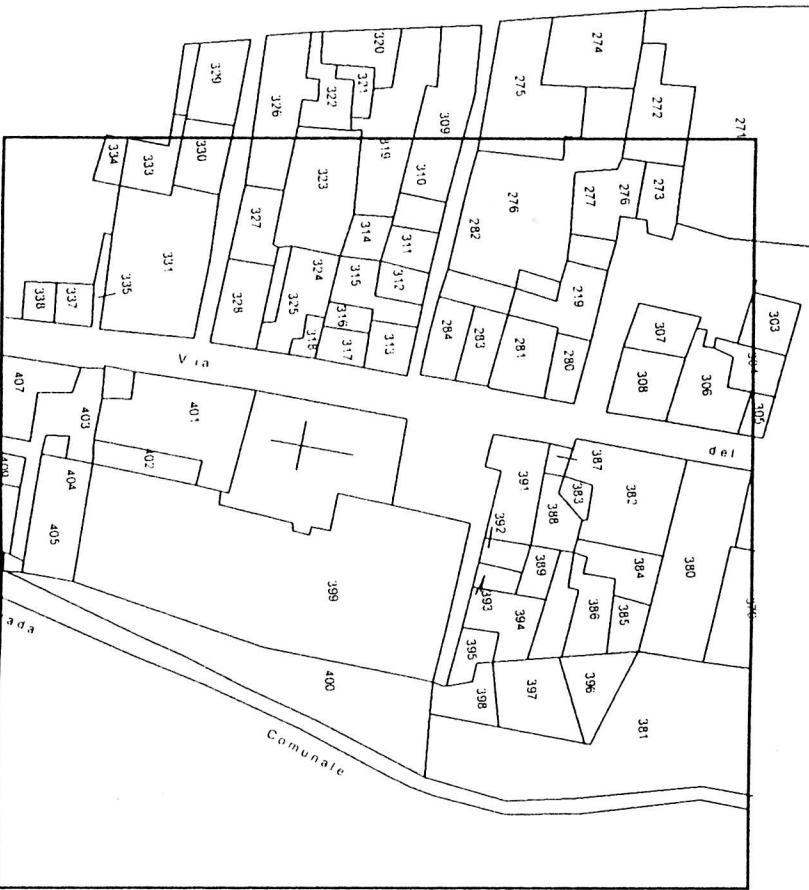


BASE DI P.P.

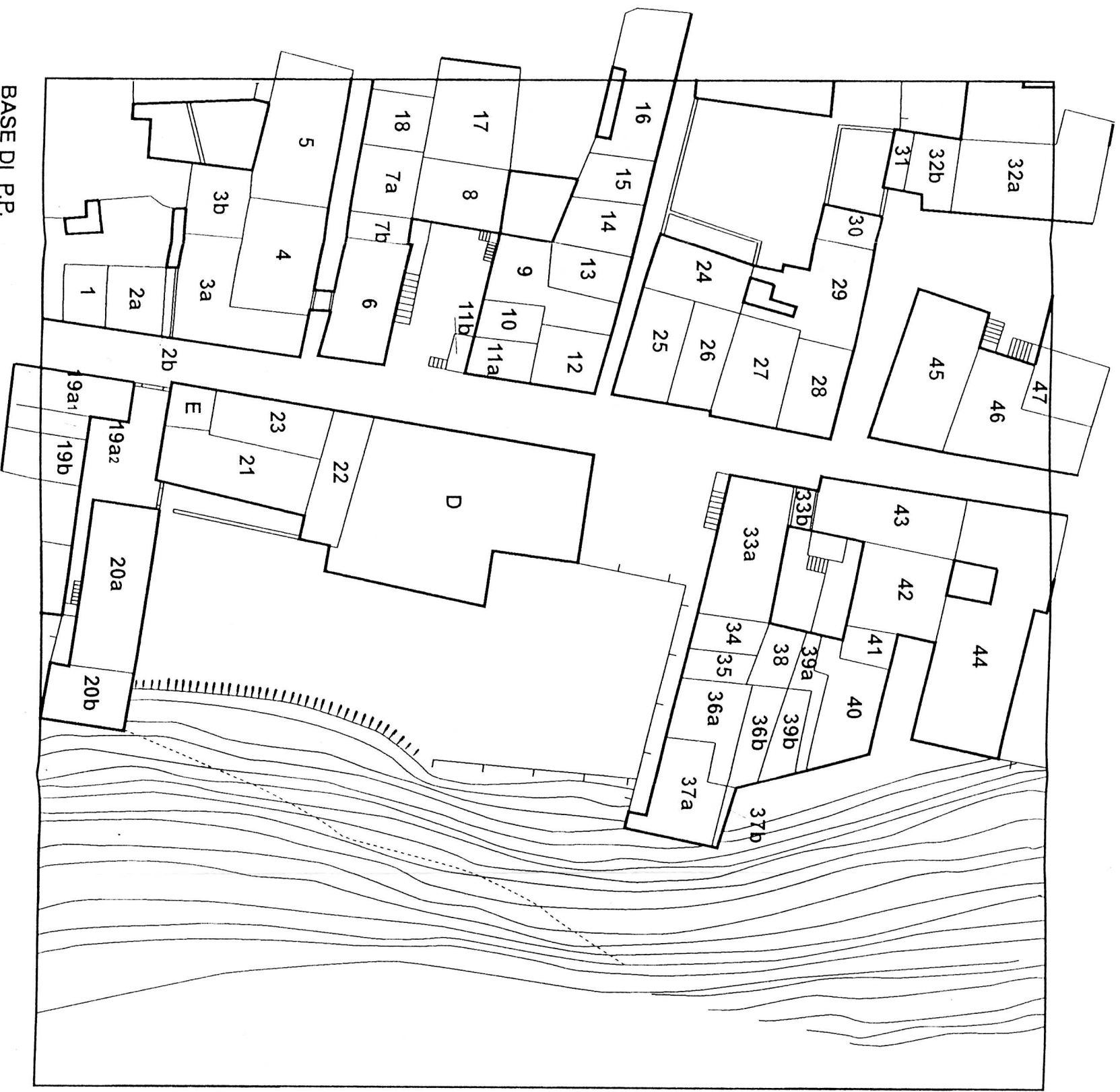
AMBITO URBANO "P"



BASE AEROFOTOGRAFOMETRICA

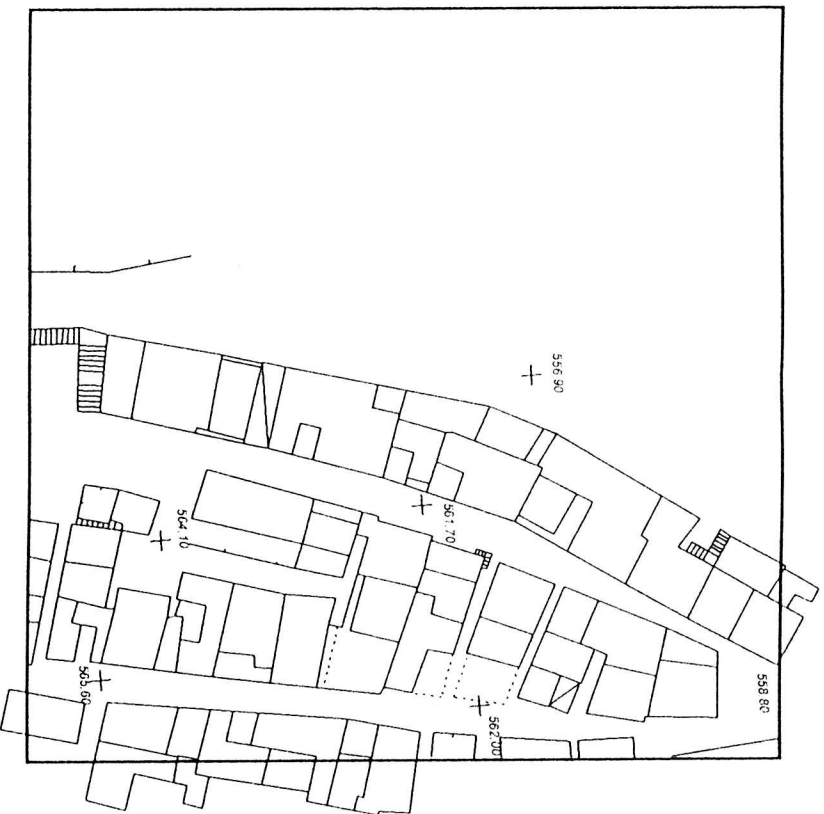


BASE CATASTALE

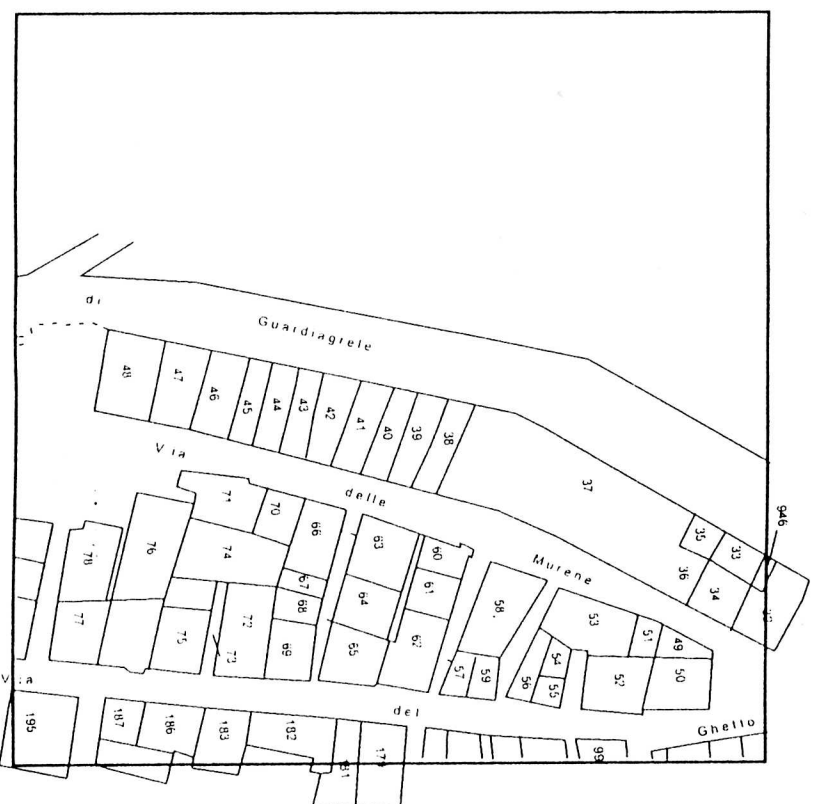


BASE DI P.P.

AMBITO URBANO "Q"



BASE AEROFOTOGRAMMETRICA

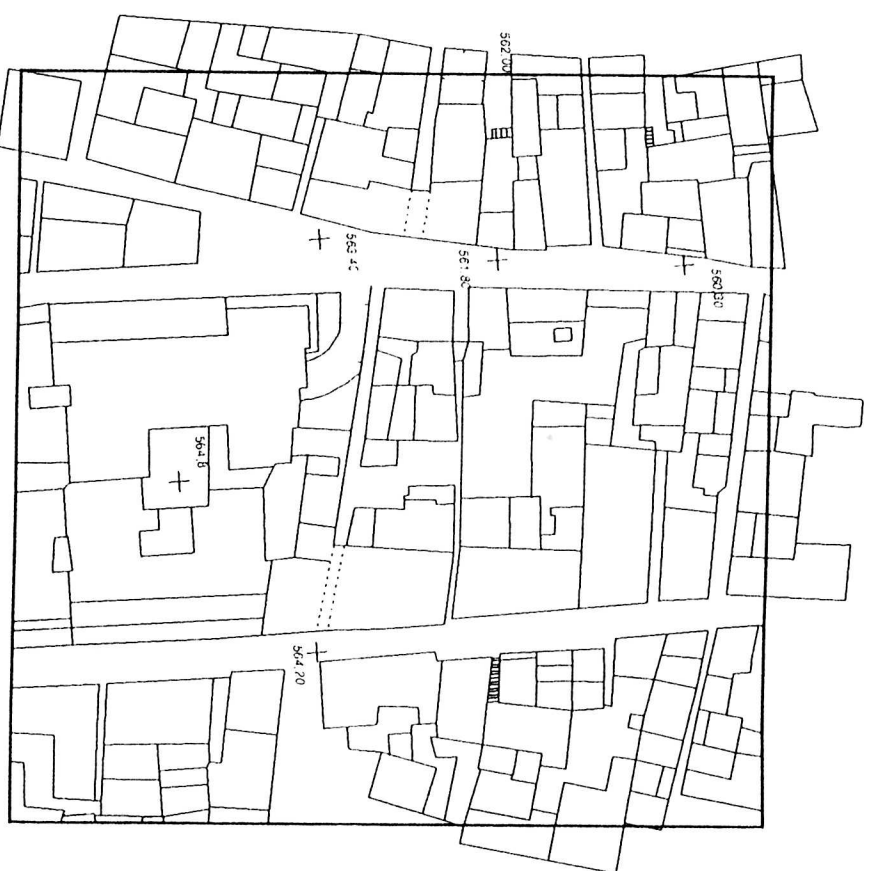


BASE CATASTALE



BASE DI P.P.

AMBITO URBANO "R"



BASE AEROFOTOGRAMMETRICA

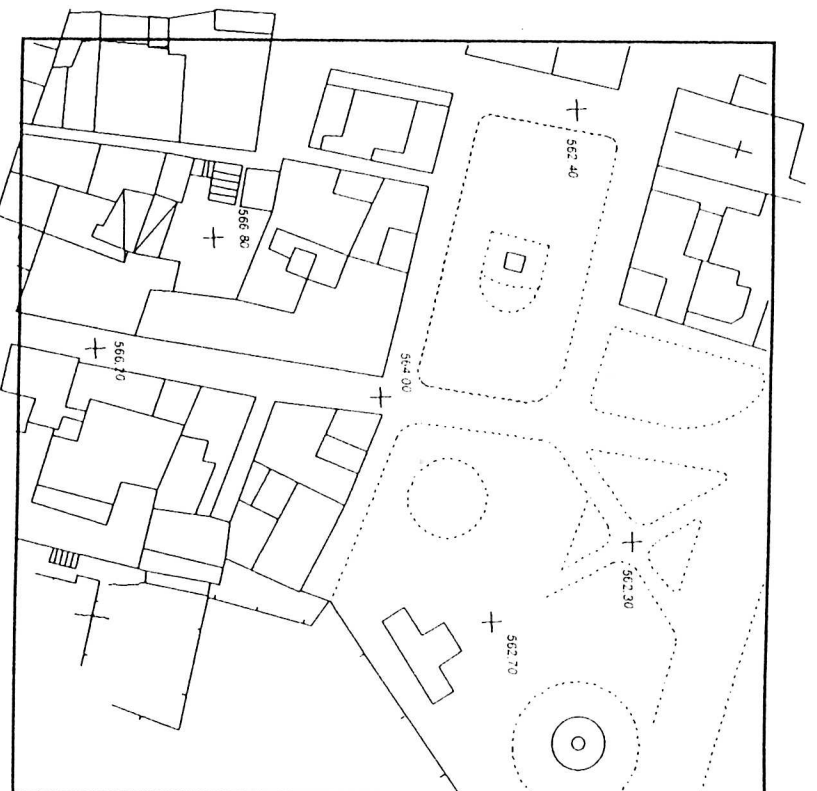


BASE CATASTALE

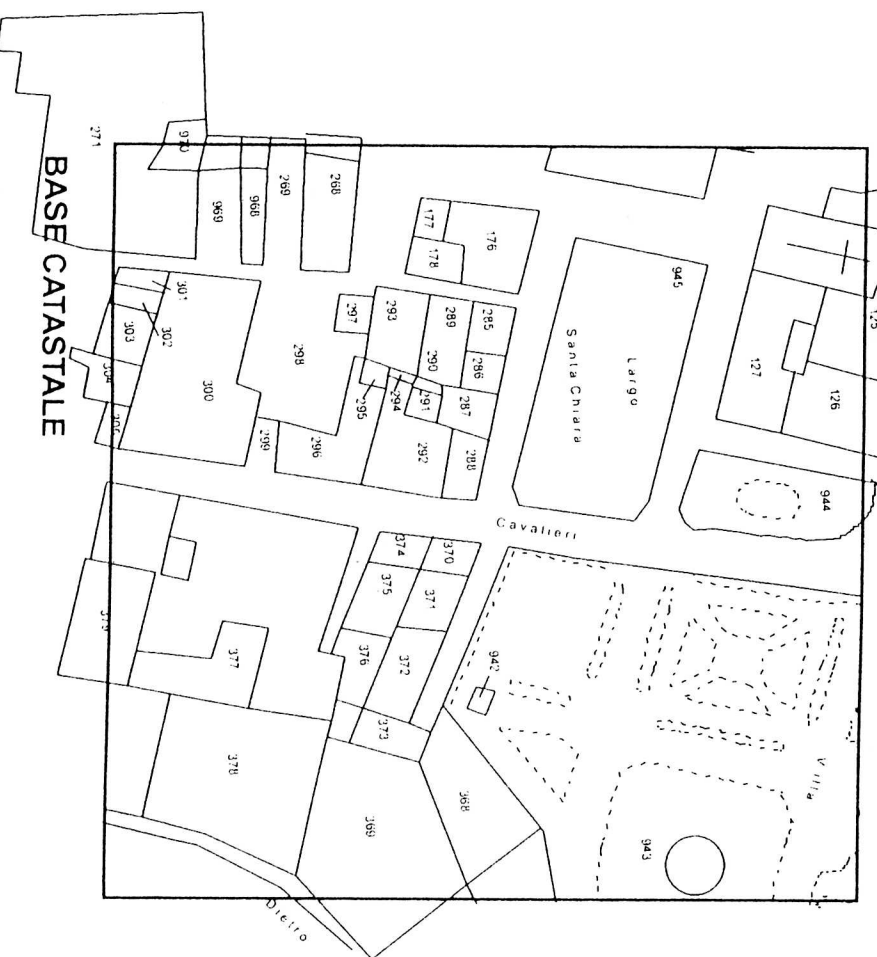


BASE DI P.P.

AMBITO URBANO "S"



BASE AEROFOTOGRAMMETRICA



BASE CATASTALE



BASE DI P.P.